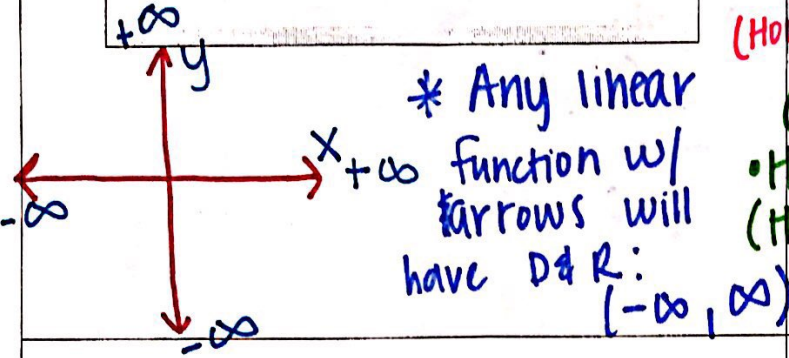
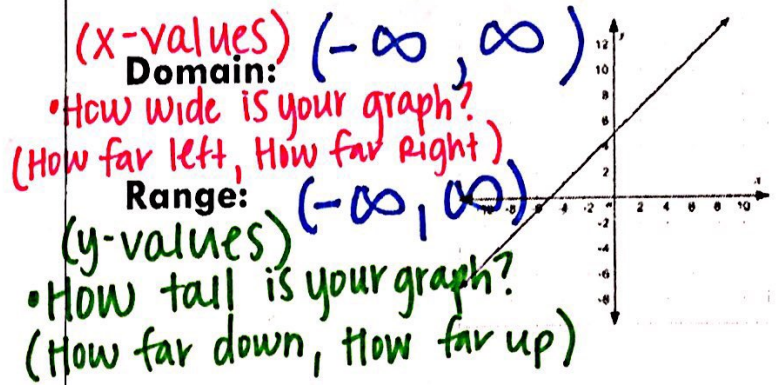


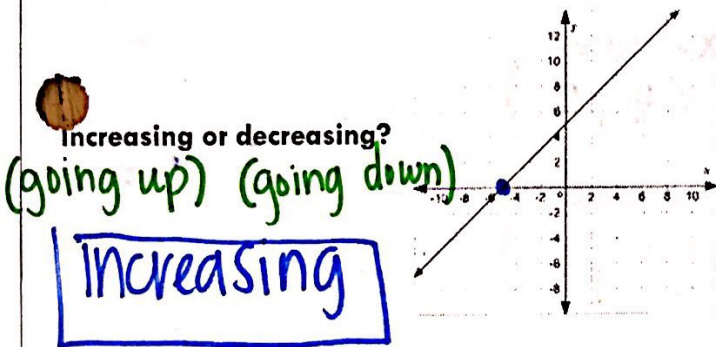
Characteristics



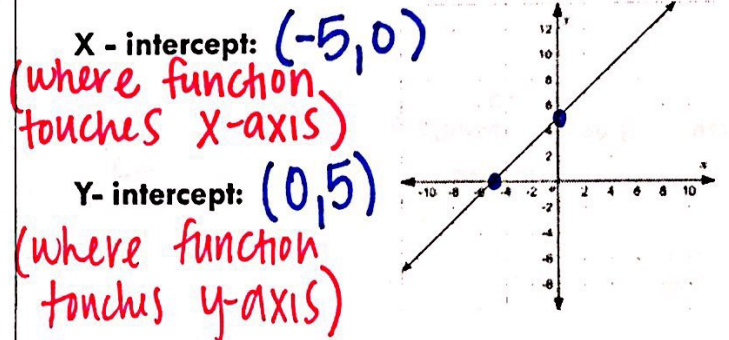
Characteristics



Characteristics

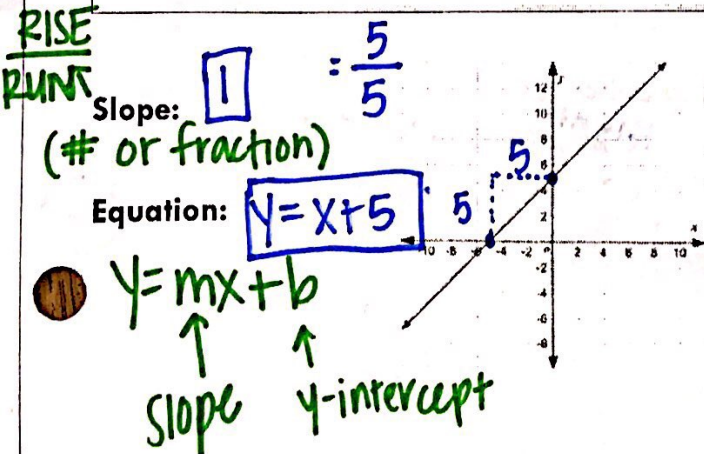


Characteristics

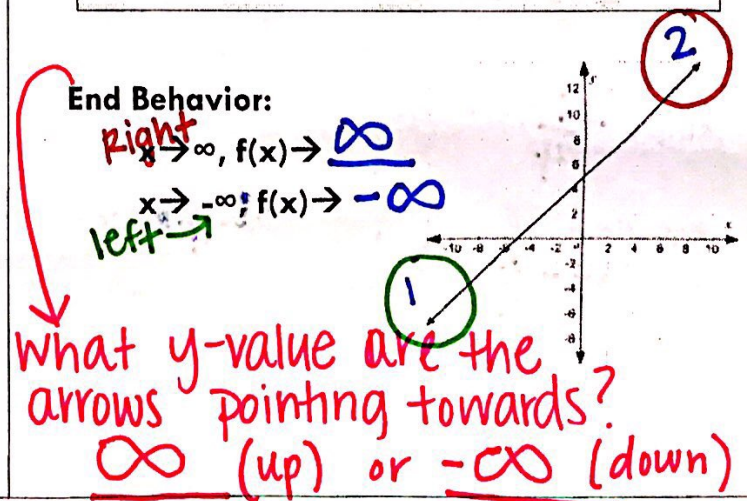


* Written as ordered pairs (x, y)

Characteristics



Characteristics



Example 2

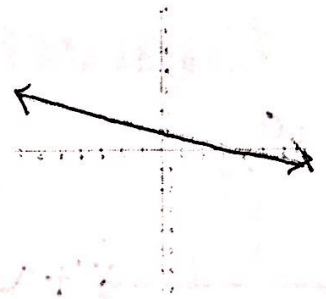
Characteristics

Domain:

$$(-\infty, \infty)$$

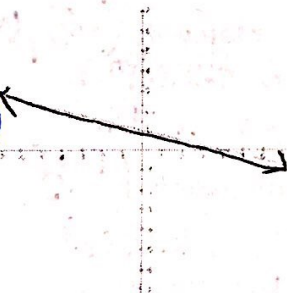
Range:

$$(-\infty, \infty)$$



Characteristics

Increasing or decreasing?



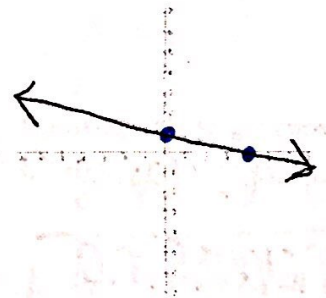
Characteristics

X - intercept:

$$(4, 0)$$

Y - intercept:

$$(0, 1)$$

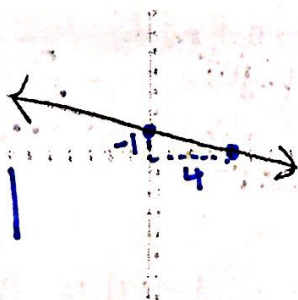


Characteristics

Slope: $-\frac{1}{4}$

Equation:

$$y = -\frac{1}{4}x + 1$$



Characteristics

End Behavior:

Right $x \rightarrow \infty, f(x) \rightarrow -\infty$

left $x \rightarrow -\infty, f(x) \rightarrow \infty$

